



Pure and Simple Solutions

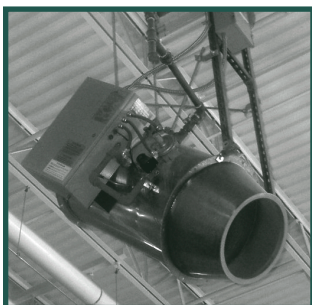
DH & APD Series

Door Heaters & Air-Process Dryers

- *High-Speed, Directed Airflow*
- *Direct-Fired Heating Efficiency*

For directional heating and drying, AbsolutAire DH and APD Series offer exceptional value. As economical, automatic door heaters, DH models efficiently block the inrush of cold air when roll-top or overhead doors are opened. As an air-process dryer – for instance, in a carwash – the APD model effectively directs high-speed, heated air to help dry vehicles exiting the drying cycle. APD units are ETL listed to meet UL 795 requirements.

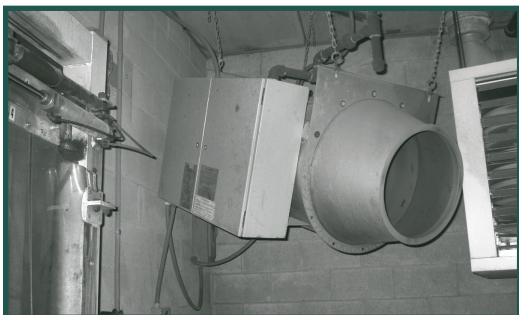
Designed and built for exceptional economy, reliability and versatility, DH and APD Series models have heating capacities up to 900 MBH and and airflow capacities up to 7,000 CFM. A near-100% efficient burner uses either natural or LP gas.



DH90 Model



APD90 Model



Key Features

- ▲ Durable Stainless Steel Housing
 - Painted Aluminized Steel Housing Available
- ▲ Waterproof Control Enclosure
 - Single (Electrical Only) on DH Series
 - Double (Electrical & Gas) on APD Series
- ▲ Remote or Door-Switch Controlled
- ▲ Automatic Electronic Spark Ignition
- ▲ Flame Rod Burner Supervision
- ▲ Maxitrol 14 Discharge Temperature Controls
 - Standard on APD90
 - Optional on DH70 & DH90
- ▲ Diagnostic Circuit Check Lights
- ▲ Direct-Drive Axial Fan
- ▲ Easy to Install at Any Angle
- ▲ Two-Year Parts/90-Day Labor Warranty

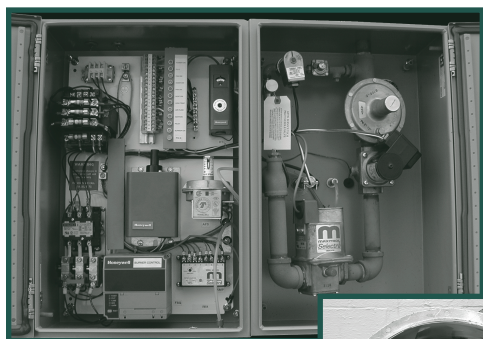
DH & APD Series Details

Robust construction includes ▶ a non-corroding stainless steel housing and weatherproof controls enclosure.

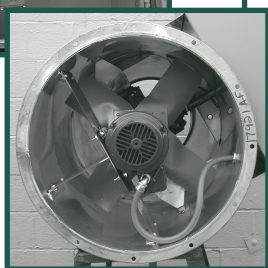
APD90 Model



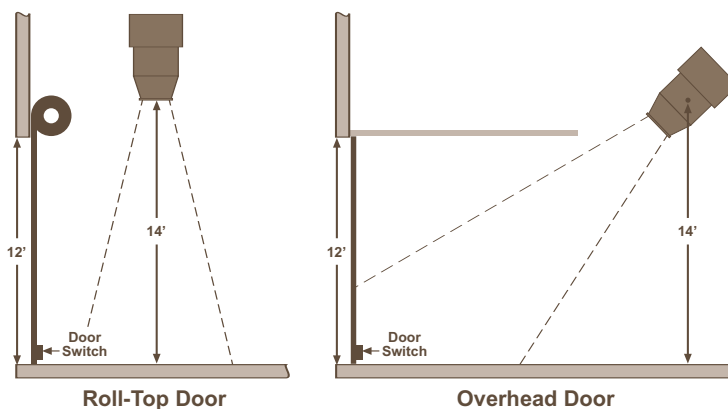
Reliability and safety are ensured with advanced gas-manifold controls, electronic ignition, flame rod burner supervision, and diagnostic circuit check lights. ▼



High-volume airflow ▶ with consistent velocity is provided by a large, direct-drive axial fan on the inlet end.



Automatic Door Install Configurations



▲ DH models can be mounted vertically just inside roll-top or straight-lift doors or mounted at an angle facing overhead doors. Connected to a door switch, they can automatically turn on and direct warm air toward the floor area near the door opening.

Specifications

	DH70	DH90 / APD90
Airflow Capacity	7,000 CFM	7,000 CFM
Heating Capacity	600,000 BTU/Hr.	900,000 BTU/Hr.
Motor (TEFC)	1.5 HP, 1,750 RPM	1.5 HP, 1,750 RPM
Power	3-phase/60 Hz, or 1-phase/60 Hz	3-phase/60 Hz, or 1-phase/60 Hz
Fuel	Natural or LP Gas	Natural or LP Gas
Gas Inlet Pipe	1-inch IPS	1-inch IPS
Dimensions	41" long X 25" dia.	41" long X 25" dia.
Unit Weight	340 pounds	370 pounds

Pure and Simple Solutions

Represented By:



5496 North Riverview Drive • Kalamazoo, MI 49004
Phone: 800.804.4000 • Fax: 269.382.5291

www.absolutaire.com