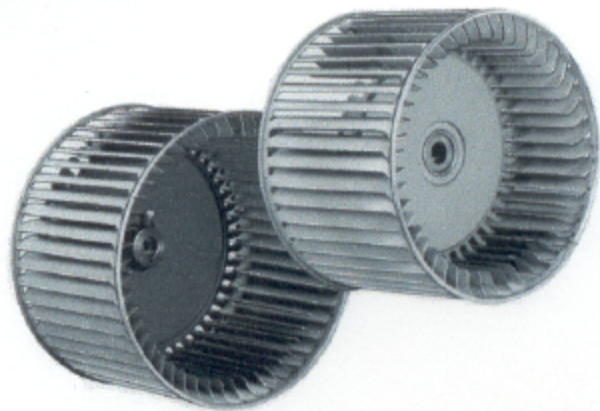
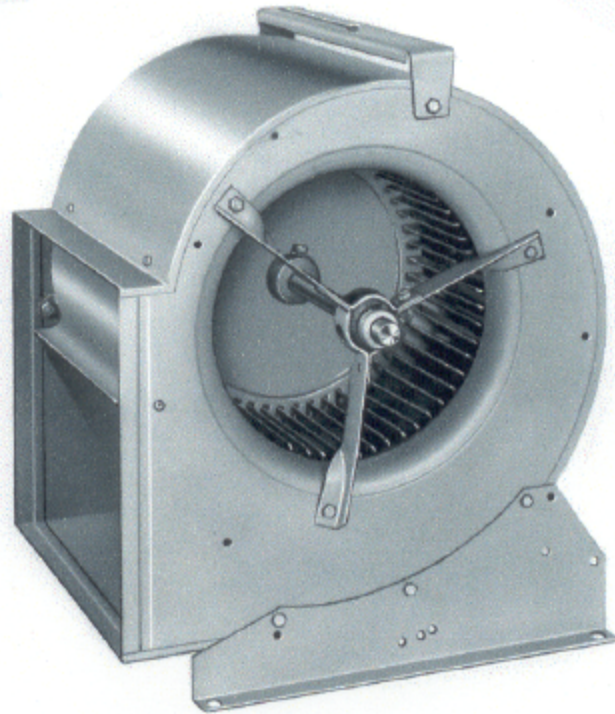
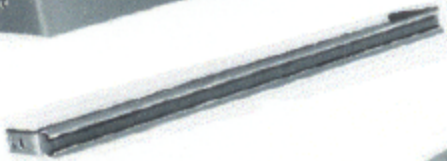


# "G" SERIES BLOWERS AND REPLACEMENT PARTS



**SERIES**

"G" Series Blowers

G-DD Direct Drive

Replacement Wheels

Bearings & Brackets & Pulleys

Component Replacement Chart

**PAGE**

2, 3, 4

5

6

7

8

# "G" SERIES DOUBLE INLET BELT DRIVE BLOWERS

- Capacity range 200 to 8000 CFM.
- Eleven standard models in full and narrow widths.
- The blower wheel has an exclusive centre disc which allows Delhi blowers to be used safely at speeds well above any normal requirement.
- Delhi blower housings have extruded holes to give greater holding power for mounting base sides and motor bracket.
- Blower housing is finished in high gloss, green baked enamel paint.
- Matte finish zinc coated wheel and cut-off baffle.



- Available with permanently lubricated sleeve bearings suitable for operation in ambient temperatures of +30 to +120 deg. F and under 1000 RPM

or

Ball bearings with a sealed lifetime supply of lubricant for operation in ambient temperatures of -65 to +250 deg. F.

- Shaft dimensions and finish are carefully controlled to ensure quiet, trouble free operation.
- Shafts for ball bearing models have keywayed ends. Sleeve bearing model shafts have flats.
- Detachable base sides can be installed in any of four discharge positions.

### NOMENCLATURE:

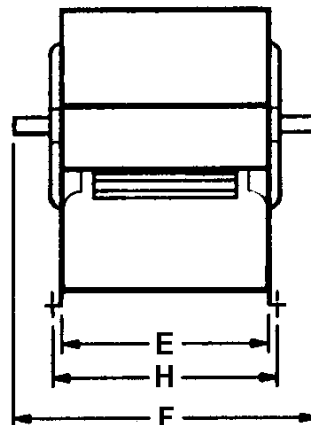
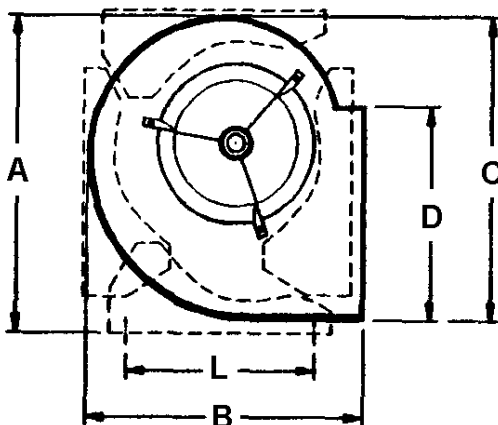
eg: GZ - 5

NOMINAL WHEEL DIA. - IN. \_\_\_\_\_  
 NOMINAL WHEEL WIDTH - IN. \_\_\_\_\_  
 (SAME AS WHEEL DIA. WHEN OMITTED)

### DIMENSIONS (inches)

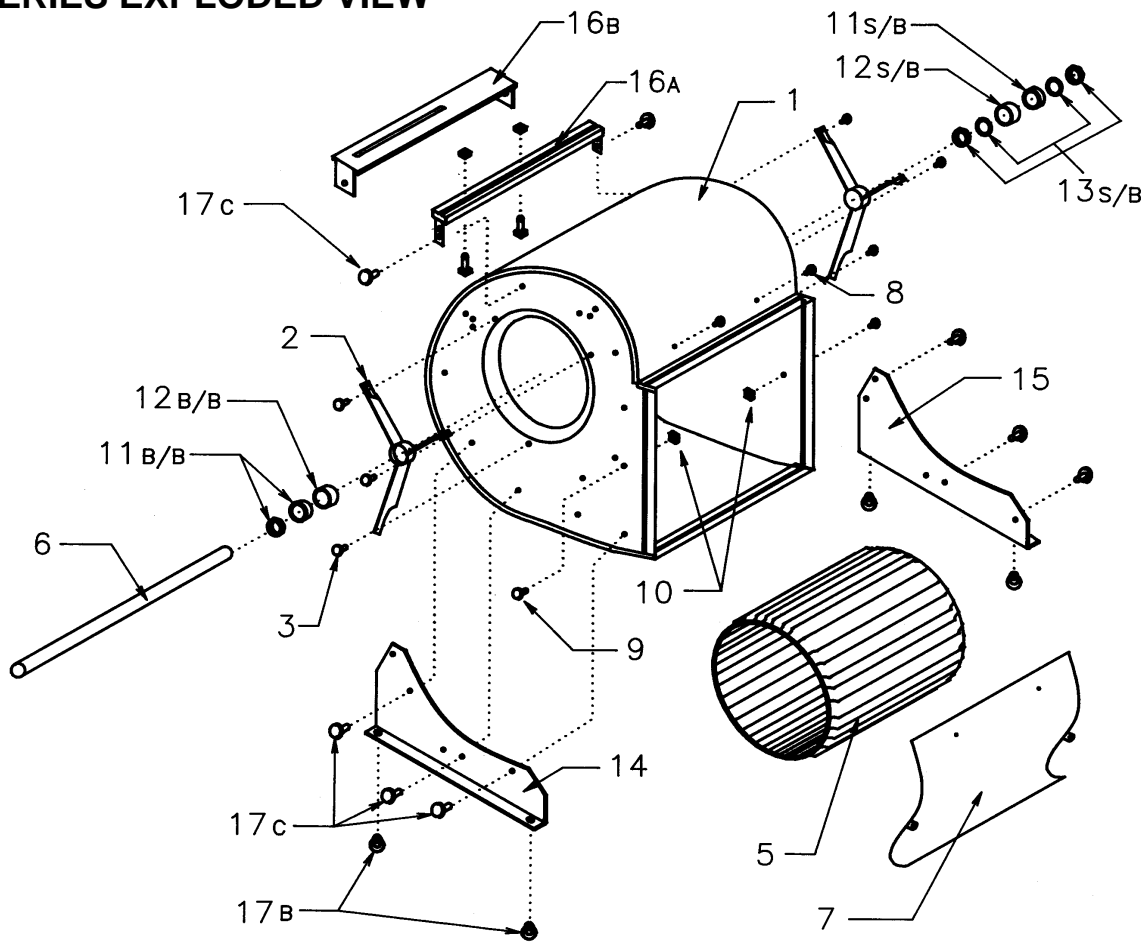
MODEL	A	B	C	D	E	F	H	L	SHAFT DIAMETER	WHEEL DIAMETER	WHEEL WIDTH	WT. (LBS.)
G7-5	14-5/16	12-5/16	12-11/16	8-1/4	6-7/8	11-1/2	7-7/8	9-5/8	3/4	8-1/16	4-15/16	15
G7	14-5/16	12-5/16	12-11/16	8-1/4	9-3/16	14-3/16	10-3/16	9-5/8	3/4	8-1/16	7-3/16	17
G9-7	16-15/16	15-1/16	15-9/16	10-1/4	9-3/16	14-3/16	10-3/16	11-3/4	3/4	10-1/4	7-3/16	21
G9	16-15/16	15-1/16	15-9/16	10-1/4	11-13/16	16-5/16	12-13/16	11-3/4	3/4	10-1/4	9-9/16	23
G10-8	19	16-3/4	17-3/8	11-3/8	10-1/2	15	11-1/2	13-3/8	3/4	11-1/8	8-1/16	25
G10	19	16-3/4	17-3/8	11-3/8	13-1/8	17-5/8	14-1/8	13-3/8	3/4	11-9/16	10-13/16	28
G12-9	22-1/8	19-1/2	20-5/8	13-7/16	12-1/4	17-1/4	13-1/4	16-1/8	3/4	12-7/8	9-9/16	32
G12	22-1/8	19-1/2	20-5/8	13-7/16	15-5/8	20-1/2	16-5/8	16-1/8	3/4	12-7/8	12-13/16	38
G15-10	25-3/4	22-11/16	24-1/4	15-7/8	14-11/16	22	15-11/16	19-1/2	1	15-1/2	10-13/16	52
G15	25-3/4	22-11/16	24-1/4	15-7/8	18-5/8	25	19-5/8	19-1/2	1	15-1/2	15-1/16	62
G18	30-1/2	27	29	18-7/8	21-7/8	30-1/8	22-7/8	24	1	18-1/2	18-1/2	99

NOTE: Model G15-10 was previously model G15-12



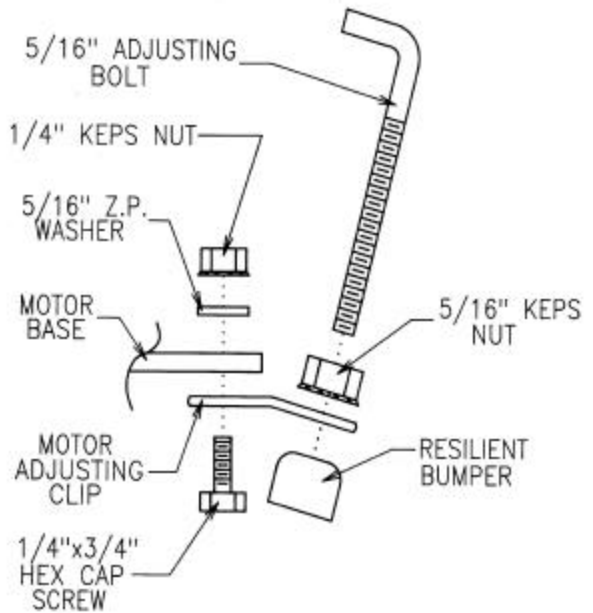


# G - SERIES EXPLODED VIEW



ITEM	DESCRIPTION
1	HOUSING
2	BEARING BRACKET
3	BEARING BRACKET FASTENER
5	WHEEL
6	SHAFT
7	CUT-OFF BAFFLE
8	BAFFLE FASTENERS A
9 & 10	BAFFLE FASTENERS B
11 B/B	BALL BEARING WITH LOCKING COLLAR
11 S/B	SLEEVE BEARING
12 B/B	BALL BEARING - RESILIENT SLEEVE
12 S/B	SLEEVE BEARING - RESILIENT SLEEVE
13 S/B	LEATHER WASHER & THRUST COLLAR
14	BASE SIDES LH
15	BASE SIDES RH
16A	MOTOR BRACKET (3/4 HP MAX)
16B	MOTOR BRACKET (2 OR 3 HP MAX)
17B	RESILIENT GROMMETS
17C	1/4 X 20 SELF TAPPING SCREWS

## MOTOR ADJUSTING LEG AND HARDWARE KIT



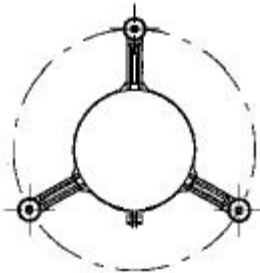
## DIRECT DRIVE DOUBLE INLET BLOWERS - LESS MOTOR

MODEL *	WHEEL DIA.	WHEEL WIDTH	# BLADES	BORE
G9-7DD x 1/2"	9-13/16	7-3/16	44	1/2"
G9DD x 1/2"	9-13/16	9-9/16	44	1/2"
G10-8DD x 1/2"	10-3/4	8-1/16	48	1/2"
G10DD x 1/2"	10-3/4	10-13/16	48	1/2"
G12-9DD x 1/2"	12-7/8	9-9/16	58	1/2"

DIRECT DRIVE BLOWERS ARE SUPPLIED FOR CCW DRIVE AS VIEWED FROM DRIVE (MOTOR) SIDE.



## DIRECT DRIVE MOTOR MOUNT



TO FIT  
BLOWER MODELS  
G9-7DD & G9DD  
G10-8DD & G10DD  
G12-9DD

BOLT  
CIRCLE  
9-1/32"  
10-3/16"  
12-1/32"

ACCEPTS NEMA 48 FRAME  
5.5" TO 5.6" DIAMETER MOTORS

MOTOR MOUNTING BRACKETS ARE SUPPLIED WITH PRE-FORMED MOTOR BAND AND 3 ARMS WITH RESILIENT ISOLATION MOUNTS

### NOMENCLATURE:

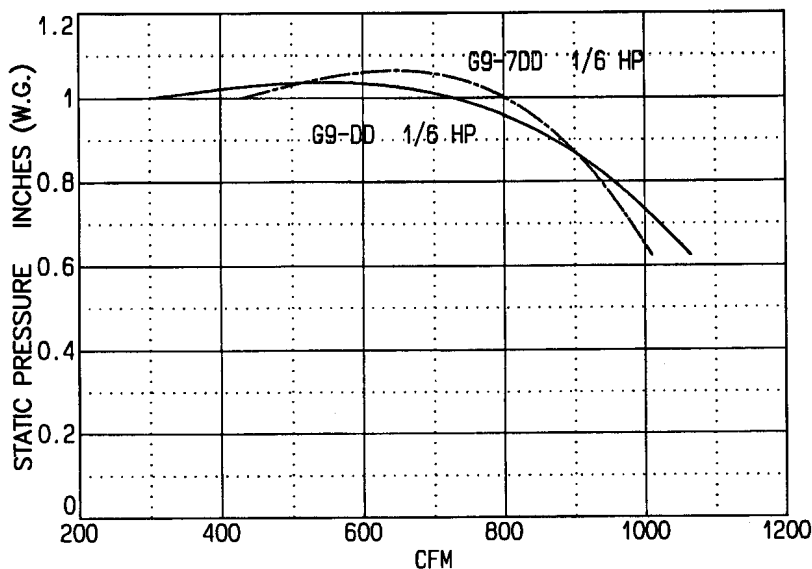
eg. G9 - 7 DD x 1/2"

NOMINAL WHEEL DIA. - IN. \_\_\_\_\_  
NOMINAL WHEEL WIDTH - IN. \_\_\_\_\_  
DIRECT DRIVE \_\_\_\_\_  
WHEEL BORE SIZE - IN. \_\_\_\_\_

## DIRECT DRIVE DOUBLE INLET BLOWERS - c/w MOTOR

MODEL *	G9-7-DD-6	G9-DD-6
MOTOR HP	1/6	1/6
SP	CFM	CFM
5/8"	1010	1065
3/4"	960	990
1"	430	300

OPERATION NOT RECOMMENDED WITH SP UNDER 5/8"  
ALL MOTORS ARE SINGLE SPEED, 1050 RPM  
120V, 1 PHASE, SHADED POLE



### NOMENCLATURE:

eg. G9 - DD - 6

NOMINAL WHEEL DIA. - IN. \_\_\_\_\_  
DIRECT DRIVE \_\_\_\_\_  
1/6 HP MOTOR \_\_\_\_\_

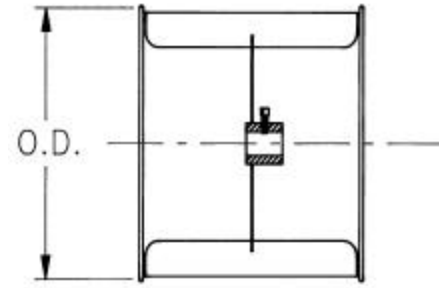
\* **NOTE:**  
DIMENSIONS ARE THE SAME AS  
BELT DRIVEN MODELS ON PAGE 2.

e.g. G9-7DD x 1/2" AND G9-7DD-6  
HAVE THE SAME DIMENSIONS AS G9-7.

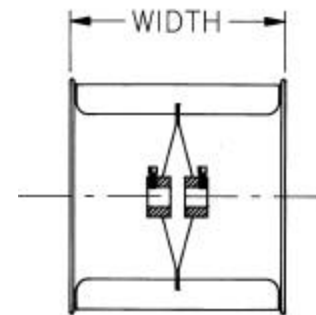
# BLOWER WHEELS

## DOUBLE INLET WHEELS

MODEL	O.D.	WIDTH	BORE	STYLE
<b>G7-5W</b>	8-1/16	4-15/16	3/4	A
<b>G7W</b>	8-1/16	7-3/16	3/4	A
<b>G9-7W</b>	10-1/4	7-3/16	3/4	A
<b>G9W</b>	10-1/4	9-9/16	3/4	A
<b>G10-8W</b>	11-1/8	8-1/16	3/4	A
<b>G10W</b>	11-9/16	10-13/16	3/4	A
<b>G12-9W</b>	12-7/8	9-9/16	3/4	B
<b>G12W</b>	12-7/8	12-13/16	*3/4 or 1	B
<b>G15-10W</b>	15-1/2	10-13/16	1	B
<b>G15W</b>	15-1/2	15-1/16	1	B
<b>G18W</b>	18-1/2	18-1/2	1	B
<b>920W</b>	20-3/4	20-3/8	# 1-3/16	B
<b>922W</b>	22-1/4	22-3/8	# 1-3/16	B
<b>925W</b>	26-1/8	25-3/4	# 1-3/16	B
<b>G9-7W-DD</b>	9-13/16	7-3/16	1/2	A
<b>G9W-DD</b>	9-13/16	9-9/16	1/2	A
<b>G10-8W-DD</b>	10-3/4	8-1/16	1/2	A
<b>G10W-DD</b>	10-3/4	10-13/16	1/2	A
<b>G12-9W-DD</b>	12-7/8	9-9/16	1/2	A



STYLE A



STYLE B

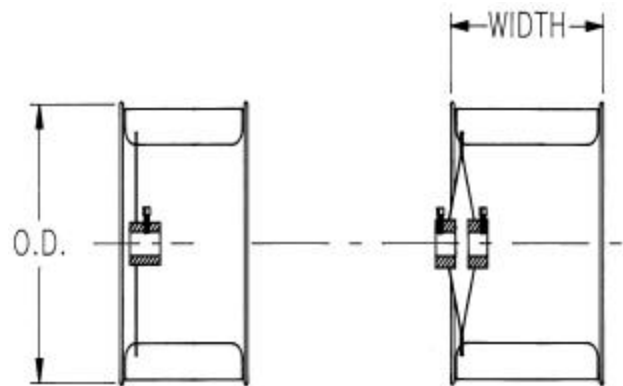
DIMENSIONS (INCHES) # OTHER BORE SIZES AVAILABLE.

\* SPECIFY 3/4" OR 1" BORE

NOTE: MODEL G15-10 WAS PREVIOUSLY MODEL G15-12.

## SINGLE INLET WHEELS

MODEL	O.D.	WIDTH	BORE	STYLE
<b>407W</b>	8-1/16	4-15/16	3/4	A
<b>409W</b>	9-13/16	7-3/16	3/4	A
<b>410W, 610W</b>	11-1/8	7-3/16	3/4	A
<b>412W, 612W</b>	12-7/8	7-3/16	3/4	A
<b>415W, 615W</b>	15-1/2	9-9/16	1	B
<b>418W, 618W</b>	18-1/2	10-13/16	1	B
<b>420W, 620W</b>	20-3/4	10-1/4	1-3/16	B
<b>422W, 622W</b>	22-1/4	11-1/4	1-3/16	B
<b>425W, 625W</b>	26-1/8	13	1-3/16	B



STYLE A

STYLE B

DIMENSIONS (INCHES)

# REPLACEMENT PARTS

## BEARINGS

### SLEEVE BEARINGS

Bearings contain a lifetime lubricant supply. No need to re-lubricate. Available in 3/4" and 1" bores.



### BALL BEARINGS

Have a sealed in lifetime supply of grease. No need to re-lubricate. "Eccentric Collar" provides positive locking to shaft.



### RESILIENT SLEEVE

Neoprene resilient sleeve impregnated with electrically conductive material prevents static build up.



Resilient sleeves are available for both sleeve and ball bearings 3/4" or 1" bore.

### BEARING BRACKETS

#### 3 HP x 3/4", 16 GAUGE

Bearing bracket accepts both 3/4" bore sleeve and ball bearings with matching resilient sleeve.



#### 5 HP x 1", 11 GAUGE

Bearing bracket accepts 1" bore ball bearing models with matching resilient sleeve.



#### 3 HP x 1", 16 GAUGE

Bearing bracket accepts 1" sleeve bearing with matching resilient sleeve G15 only.

### MOTOR MOUNTING BRACKET



Fractional (3/4 HP MAX.)



2 & 3 HP motor mounting brackets. (2 HP illustrated, 3 HP is similar).

### MOTOR PLATFORM

Used on 200 and 9200 Series Duct Blowers.



### PULLEYS

Machined cast iron pulleys have been designed for strength and light weight for applications up to 3/4 HP. Adjustable pitch motor pulleys provide 40% RPM adjustment for optimum air flow.

Blower Pulley (Fixed Pitch)	Motor Pulley (Adjustable Pitch)		O.D.	Pitch Dia. (4L & A Belts)
	3-1/4 x 1/2 or 5/8"	3-1/2 x 1/2 or 5/8"		
	<b>RPM RANGE</b> (based on 1750 RPM motor & 4L or A belts)			
3x3/4"	1188 - 1813	1500 - 2125	3.00"	2.80"
4x3/4"	875 - 1336	1105 - 1566	4.00"	3.80"
5x3/4"	696 - 1062	879 - 1245	4.93"	4.78"
6x3/4" or 1"	575 - 878	727 - 1029	5.93"	5.78"
7x3/4" or 1"	490 - 749	619 - 878	6.93"	6.78"
8x3/4" or 1"	427 - 652	540 - 765	7.93"	7.78"
9x3/4" or 1"	379 - 578	478 - 678	8.93"	8.78"
10x3/4" or 1"	340 - 519	429 - 608	9.93"	9.78"
12x3/4" or 1"	282 - 431	357 - 505	11.93"	11.78"



## BLOWER COMPONENT REPLACEMENT CHART

MODEL	G7-5 x 3/4" to G12 x 3/4"	G12 x 1" to G18 x 1"	207 to 212	215 & 218	9209 & 9210	9212 & 9215	9218	9220	307 to 312	315 & 318	407 to 412	415 & 418	420 to 425	610 & 612	615 & 618	620 to 625	709 to 712	715 & 718	SIS-9 to SIS-12	SIS-15 & SIS-18	SIS-20	809 & 810	812 & 818	907 to 936	
<b>BEARINGS</b>																									
SLEEVE BEARING	3/4"	1"																							
BALL BEARING	3/4"	1"	3/4"	1"	3/4"	1"			3/4"	1"	3/4"	1"						3/4"	1"	3/4"	1"		3/4"	1"	
C.I.P.B.							1"	1-7/16"					1-3/16"	3/4"	1"	1-3/16"						1-3/16"			C.I.P.B.
<b>RESILIENT SLEEVE</b>																									
3/4" SLEEVE BRG. 1-3/4" OD	SB																								
1" SLEEVE BRG. 2-1/4" OD		SB																							
3/4" BALL BRG. 1-3/4" OD	BB		x		x				x		IN-DR							x		x			x		
1" BALL BRG. 2-1/4" OD		BB		x		x				x		IN							x		x			x	
1" BALL BRG. 2-1/2" OD												DR													
<b>BEARING BRACKET</b>																									
3 HP x 3/4" BRG. BRACKET	x			x		x			x		x								x		x			x	
3 HP x 1" BRG. BRACKET		G15 - SB																							
5 HP x 1" BRG. BRACKET		x		x		x				x		x												x	

NOT APPLICABLE

NOT APPLICABLE

NOT APPLICABLE

NOT APPLICABLE

MODEL	G7-5 x 3/4" to G12 x 3/4"	G12 x 1" to G18 x 1"	207 to 218	9209 & 9210	9212 & 9215	9218 & 9220	307 to 310	312 to 318	407 to 412	415 & 418	420 to 425	610 & 612	615 & 618	620 to 625	709 to 712	715 & 718	SIS-9 to SIS-12	SIS-15 & SIS-18	SIS-20	809 to 815	818	912 to 936	
<b>MOTOR BRACKET</b>																							
3/4 HP MOTOR BRACKET	x						x																
2 HP MOTOR BRACKET		G12 G15						312	x							x		x					
3 HP MOTOR BRACKET		G18						315 318		415 418						x 718 (2)		SIS-15 SIS-18 (2)			x	x	
MOTOR PLATE 5 HP						x				418												x	

SB = SLEEVE BEARING

BB = BALL BEARING

C.I.P.B. = CAST IRON PILLOW BLOCK BEARING  
SEE MODEL SHAFT DIAMETER  
FOR BORE SIZES.

IN = INLET SIDE

DR = DRIVE SIDE

### HOW TO USE THIS CHART:

**e.g. G10** (Refer to G7-5 to G12 Column)

**e.g. 712** (Refer to 709 to 712 Column)

**Bearings:** Choice of 3/4" sleeve or 3/4" ball bearing.

**Resilient Sleeve:** Both 3/4" sleeve and 3/4" ball bearing. Use 1-3/4" O.D. resilient sleeve.

**Bearing Bracket:** 3 HP x 3/4" (accepts 3/4" sleeve or ball bearing).

**Motor Bracket:** 3/4 HP max. motor bracket.

3/4" ball bearing.

1-3/4" O.D. resilient sleeve (accepts 3/4" ball bearing).

3 HP x 3/4".

2 HP max. motor bracket

### DELHI Industries Inc.

523 James St.

Delhi, Ontario

Canada N4B 2Z3

tel. (519)582-2440

fax. (519)582-0581

www.delhi-industries.com

e-mail: sales@delhi-industries.com

### WARRANTY

Delhi Air Moving Products are guaranteed for a period of one year against manufacturing defects in material and workmanship when operating under normal conditions. Liability is limited to the replacement of defective parts. Labour and transportation costs are not included.

REPRESENTED BY:

CAT. #SS-34-4 MAY 2002

PRINTED IN CANADA